

**2018**

**Annual Meeting**

**Lake Todd Village District**

**Annual Report for Calendar Year 2017**

# **Annual Report of the Lake Todd Village District for Calendar Year 2017**

The District commissioners held one meeting in 2017 other than the budget hearing.

## A Plea for Volunteers

The Lake Todd Village District is a municipality which is like a town. For matters related to the dam and the lake, it is governed by the citizens residing within the boundaries of the district. The district consists of all the properties with frontage on the lake. The citizens enjoy two advantages: one is the citizens are protected from liability in matters related to the lake and the dam. The other is that everyone pays their fair share of the district costs because of the district's power to tax. It takes a minimum of six people to govern the district. When the number of volunteers drops below that number, the district will not be able to operate and there is a risk that the district will be dissolved. Please step forward and do your part.

## Financial Matters

The Treasurer reports that we took in \$32,313 and spent \$32,819. We ended the year with about \$26,818, which includes about \$12,000 for the January loan payment. The Treasurer has prepared a simplified financial statement, which is appended. In addition, the Treasurer has prepared a chart showing the total expenditures for the dam improvements and the loan balance, which is appended at the end of this report.

## Audit

An audit was performed on the 2017 books. The Auditor found that our financial records were in order and our procedures met requirements. The audit summary letter is appended.

## Water Quality Testing

The water was sampled two times in 2017. Most parameters are stable within their normal range except chlorophyll-A, which spiked to 5.95 ug/l in June, the highest level since 2007. From the VLAP report: "Lake quality was generally representative of mesotrophic conditions in 2017, however chlorophyll levels spiked to almost bloom conditions in July, and have increased gradually since 2007. The increased frequency and intensity of storm events and associated stormwater runoff to the lake and tributaries is likely contributing nutrients that feed algal growth. Consider development of a watershed management plan to identify and quantify nutrient sources in the watershed, and make recommendations on where to focus management activities to reduce nutrient loads." The water test report from the State is appended at the end of this report.

## Loons

The loons did not use the nesting platform in 2017.

### Sponsor A Highway

In cooperation with the State Department of Transportation, the District cleans up about two miles of Route 103 from Main Street, Bradford to Fowler Mill Road. We have a clean-up three times a year, usually the first Saturday in May, the last Saturday in August, and the first Saturday in November. Please come and join us in this satisfying public service.

### Web Site

The web site has been kept up to date with the latest information throughout the year. Be sure to check it out when you can.

[www.laketoddvillagedistrict.us](http://www.laketoddvillagedistrict.us)

# Lake Todd Village District

## Treasurer's Report

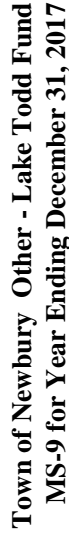
### for the Calendar Year 2017

		GENERAL FUND
<b>1/1/2016</b>	<b>Beginning Balance:</b>	<u>\$27,324.55</u>
<b>Income:</b>		
	Tax Income Bradford	9,165.00
	Tax Income Newbury	22,854.00
	Loan	0.00
	Received from Commissioners	294.00
	<b>Total Income:</b>	<u>\$32,313.00</u>
<b>Expenses:</b>		
	Commissioners' Orders Paid	<u>32,819.12</u>
	<b>Total Expenses:</b>	<u>\$32,819.12</u>
<b>12/31/16</b>		
	<b>Ending Balance:</b>	<u>\$26,818.43</u>
	Current loan balance	<u>\$88,996.60</u>

Respectfully submitted,

  
 Margaret Weiler, Treasurer

Date: 6/27/2018



PRINCIPAL - ACCOUNT #8000006194										INCOME - ACCOUNT #8000006194					
DATE	TRUST NAME	PURPOSE	% OF TOTAL	YEAR TO DATE TOTALS					YEAR TO DATE TOTALS						
				BALANCE	NEW	BALANCE	BALANCE	Transf/	BALANCE						
				01/01/17	FUNDS	12/31/17	01/01/17	Gross Income	Mgmt Fees	Income/ Exp	12/31/17				
2007	Lake Todd - Non Cap Reserve	Reserves	100.00%	9,262.25	6,000.00	(30.87)	-	15,231.38	583.94	244.94	(90.05)	-	738.83	15,970.21	
				100%	9,262.25	6,000.00	(30.87)	-	15,231.38	583.94	244.94	(90.05)	-	738.83	15,970.21

April 25, 2018

Lake Todd Village District  
PO Box 169  
Bradford, NH 03221

Re: Summary of Annual Audit for Fiscal Year 2017

To Whom It May Concern:

An audit of the Lake Todd Village District General Ledger/Financial Records was conducted on, Tuesday, April 10, 2018 in accordance with Form MS 60. The audit was performed by Peter Carl and was assisted by Margie Weiler, Treasurer of the Lake Todd Village District.

The audit was conducted by utilizing form MS 60. The audit consisted of analyzing and comparing the Lake Todd Village District General Ledger, bookkeeping and balance sheet to the various bank statements. Form MS 60 led the auditor through a litmus test of questions comparing random deposits and written checks shown in the bookkeeping to the actual bank statements verifying that the transactions were properly documented.

Form MS60 also required that information verifying the authority of parties who sign checks and maintain the bookkeeping. The form also requires the verification of periodic reconciliations.

The audit showed that all transactions that were compared in the bookkeeping to the bank statements were verified. It also showed general ledger year-end balances that matched the year-end bank statement.

The only suggestion for improvement would be similar to ones made in years past. Those suggestions would be to upgrade the bookkeeping process from an Excel spreadsheet to a more industry accepted accounting software such as a QuickBooks.

Prepared by:

A handwritten signature in black ink, appearing to read 'Peter Carl', written over a horizontal line.

Peter Carl  
Auditor



# Volunteer Lake Assessment Program Individual Lake Reports

## TODD LAKE, NEWBURY, NH

### MORPHOMETRIC DATA

Watershed Area (Ac.):	12,212	Max. Depth (m):	6.1	Flushing Rate (yr <sup>-1</sup> )	0.5
Surface Area (Ac.):	168	Mean Depth (m):	2.2	P Retention Coef:	0.88
Shore Length (m):	5,100	Volume (m <sup>3</sup> ):	1,466,500	Elevation (ft):	670

### TROPHIC CLASSIFICATION

Year	Trophic class
1991	MESOTROPHIC
2009	MESOTROPHIC

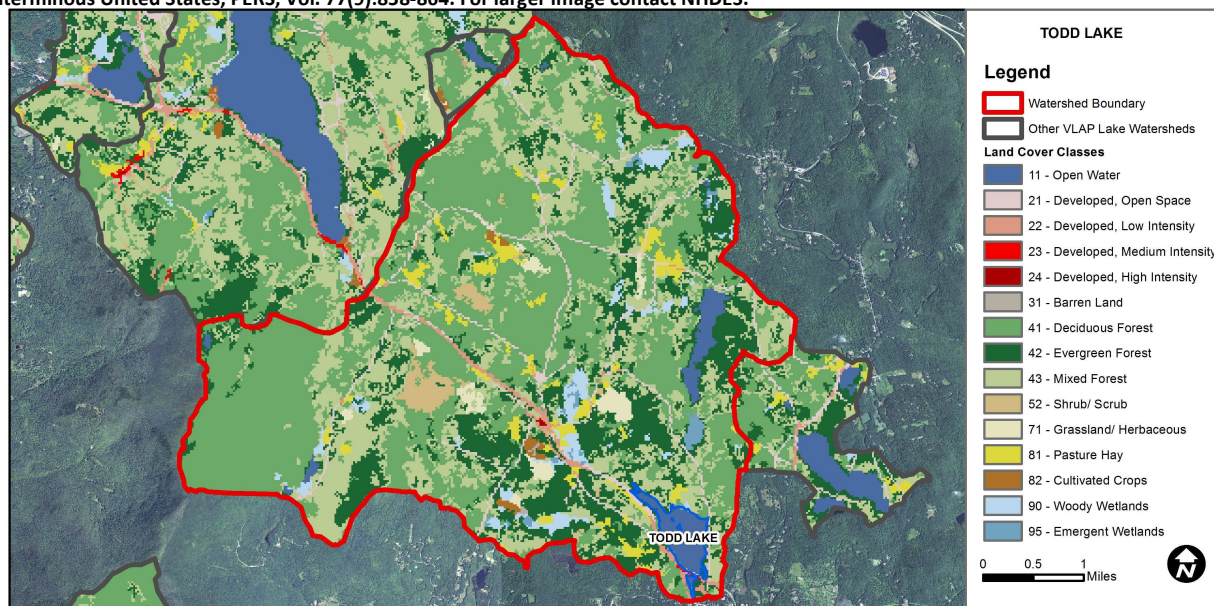
### KNOWN EXOTIC SPECIES


The Waterbody Report Card tables are generated from the DRAFT 2016 305(b) report on the status of N.H. waters, and are based on data collected from 2006-2015. Detailed waterbody assessment and report card information can be found at [www.des.nh.gov/organization/divisions/water/wmb/swqa/index.htm](http://www.des.nh.gov/organization/divisions/water/wmb/swqa/index.htm)

Designated Use	Parameter	Category	Comments
Aquatic Life	Phosphorus (Total)	Good	Sampling data is better than the water quality standards or thresholds for this parameter.
	pH	Slightly Bad	Data periodically exceed water quality standards or thresholds for a given parameter by a small margin.
	Oxygen, Dissolved	Cautionary	Limited data for this parameter predicts exceedance of water quality standards or thresholds; however more data are necessary to fully assess the parameter.
	Dissolved oxygen saturation	Cautionary	Limited data for this parameter predicts exceedance of water quality standards or thresholds; however more data are necessary to fully assess the parameter.
	Chlorophyll-a	Good	Sampling data is better than the water quality standards or thresholds for this parameter.
Primary Contact Recreation	Escherichia coli	Very Good	All sampling data meet water quality standards or thresholds for this parameter.
	Chlorophyll-a	Good	Sampling data commonly meet water quality standards or thresholds for this parameter.

### WATERSHED LAND USE SUMMARY

Fry, J., Xian, G., Jin, S., Dewitz, J., Homer, C., Yang, L., Barnes, C., Herold, N., and Wickham, J., 2011. Completion of the 2006 National Land Cover Database for the Conterminous United States, PERS, Vol. 77(9):858-864. For larger image contact NHDES.



Land Cover Category	% Cover	Land Cover Category	% Cover	Land Cover Category	% Cover
Open Water	2.52	Barren Land	0.05	Grassland/Herbaceous	1.44
Developed-Open Space	2.83	Deciduous Forest	41.51	Pasture Hay	2.92
Developed-Low Intensity	1.03	Evergreen Forest	18.9	Cultivated Crops	0.31
Developed-Medium Intensity	0.04	Mixed Forest	23.99	Woody Wetlands	2.36
Developed-High Intensity	0.02	Shrub-Scrub	1.5	Emergent Wetlands	0.6



# VOLUNTEER LAKE ASSESSMENT PROGRAM INDIVIDUAL LAKE REPORTS

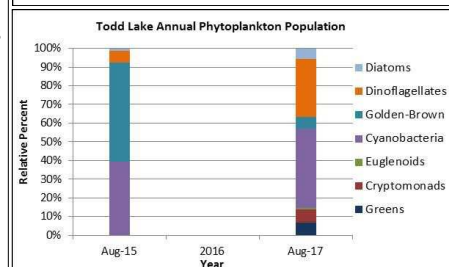
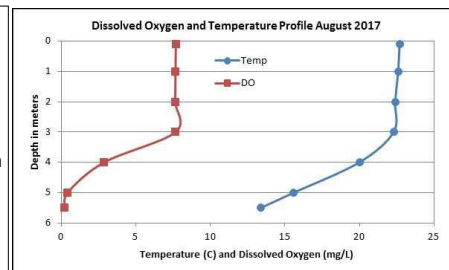
## TODD LAKE, NEWBURY

### 2017 DATA SUMMARY

**RECOMMENDED ACTIONS:** Lake quality was generally representative of mesotrophic conditions in 2017, however chlorophyll levels spiked to almost bloom conditions in July, and have increased gradually since 2007. The increased frequency and intensity of storm events and associated stormwater runoff to the lake and tributaries is likely contributing nutrients that feed algal growth. Consider development of a watershed management plan to identify and quantify nutrient sources in the watershed, and make recommendations on where to focus management activities to reduce nutrient loads. For more information visit the DES Watershed Assistance section page at [www.des.nh.gov/organization/divisions/water/wmb/was/categories/grants.htm](http://www.des.nh.gov/organization/divisions/water/wmb/was/categories/grants.htm). Continue education and outreach efforts aimed at reducing stormwater runoff and maintaining vegetative buffers utilizing DES' "NH Homeowner's Guide to Stormwater Management" and UNH Cooperative Extension's "Landscaping at the Water's Edge". Keep up the great work!

#### OBSERVATIONS (Refer to Table 1 and Historical Deep Spot Data Graphics)

- **CHLOROPHYLL-A:** Chlorophyll levels were within a moderate range in June, increased to elevated levels in July and then decreased to low levels in August. Average chlorophyll level increased from 2016, was slightly greater than the state median and the threshold for mesotrophic lakes. Historical trend analysis indicates relatively stable chlorophyll levels with moderate variability between years.
- **CONDUCTIVITY/CHLORIDE:** Epilimnetic (upper water layer), Hypolimnetic (lower water layer), Gillingham Dr. Inlet, Outlet, and Reservoir Brook conductivity and/or chloride levels were within a moderate range and approximately equal to the state medians. Historical trend analysis indicates relatively stable epilimnetic conductivity levels with moderate variability between years. Andrew Brook conductivity and chloride levels were slightly higher than the other stations and indicates impacts of road salting, however were not above a level of concern.
- **COLOR:** Apparent color was measured in the epilimnion and indicates the lake water is moderately tea colored, or brown.
- **E. COLI:** No E. coli bacteria were present in the epilimnion in July.
- **TOTAL PHOSPHORUS:** Epilimnetic phosphorus was moderate in June, decreased to a low level in July, and then increased to a moderate level in August. Average epilimnetic phosphorus level remained stable with 2016 and was approximately equal to the state median and threshold for mesotrophic lakes. Historical trend analysis indicates stable epilimnetic phosphorus levels since monitoring began. Hypolimnetic phosphorus levels increased from moderate to slightly elevated as the summer progressed. Andrew Brook phosphorus levels were slightly elevated in July and lab data note low amounts of organic matter in the sample. Gillingham Dr. Inlet phosphorus levels were elevated in July and August during low flows and July lab data note moderate amounts of organic matter in the sample. Outlet phosphorus levels were slightly elevated in June. Reservoir Brook phosphorus levels remained low from June through August.
- **TRANSPARENCY:** Transparency measured with (VS) and without (NVS) the viewscope was low (worse) in June due to wave conditions then increased (improved) as the summer progressed and was higher (best) in August. Average NVS transparency increased (improved) slightly from 2016 and was lower than the state median. Historical trend analysis indicates highly variable transparency since monitoring began. VS transparency was higher (better) than NVS transparency on each sampling event and likely a better measure of actual conditions.
- **TURBIDITY:** Epilimnetic and Hypolimnetic turbidity levels fluctuated within a low to moderate level and were within normal ranges for those stations. Andrew Brook turbidity was higher in July when organic matter was in the sample. Gillingham Dr. Inlet turbidity levels were elevated in July due to organic matter and in August during very low flow conditions. Outlet and Reservoir Brook turbidity levels fluctuated within a low level.
- **pH:** Epilimnetic, Andrew Brook, Outlet, and Reservoir Brook pH levels were within the desirable range 6.5-8.0 units, however epilimnetic pH has historically fluctuated below the desirable range. Historical trend analysis indicates significantly decreasing (worsening) epilimnetic pH levels since monitoring began. Hypolimnetic and Gillingham Dr. Inlet pH levels were slightly less than desirable.



**NH Water Quality Standards:** Numeric criteria for specific parameters. Results exceeding criteria are considered a water quality violation.

**Chloride:** > 230 mg/L (chronic)

**E. coli:** > 88 cts/100 mL – public beach

**E. coli:** > 406 cts/100 mL – surface waters

**Turbidity:** > 10 NTU above natural level

**pH:** between 6.5-8.0 (unless naturally occurring)

**NH Median Values:** Median values for specific parameters generated from historic lake monitoring data.

**Alkalinity:** 4.9 mg/L

**Chlorophyll-a:** 4.58 mg/m<sup>3</sup>

**Conductivity:** 40.0 uS/cm

**Chloride:** 4 mg/L

**Total Phosphorus:** 12 ug/L

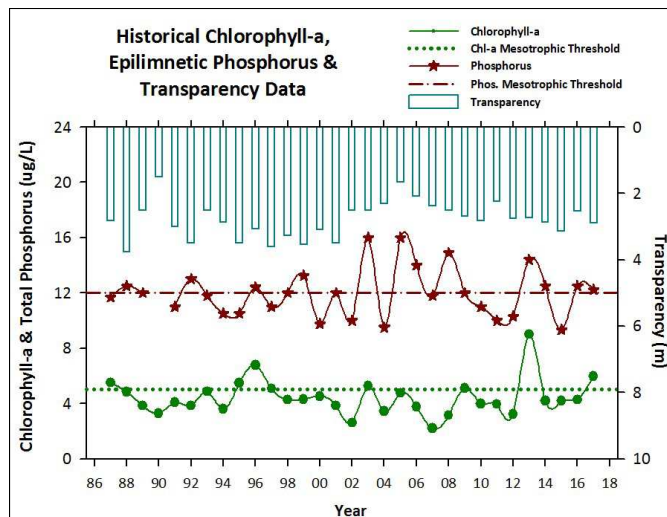
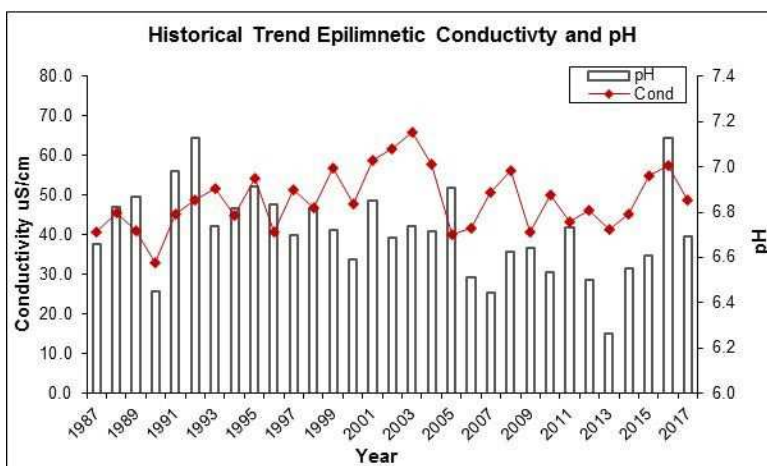
**Transparency:** 3.2 m

**pH:** 6.6

Station Name	Table 1. 2017 Average Water Quality Data for TODD LAKE-NEWBURY										
	Alk. mg/l	Chlor-a ug/l	Chloride mg/l	Color PCU	Cond. uS/cm	E. Coli #/100ml	Total P ug/l	Trans. m		Turb. ntu	pH
								NVS	VS		
Epilimnion	6.3	5.95	9	60	48.6	0	12	2.89	3.59	0.89	6.69
Hypolimnion					47.2		16			1.78	6.13
Andrew Brook			15		82.1		16			1.31	6.89
Gillingham Dr. Inlet			3		35.3		30			2.14	6.35
Outlet					51.0		11			0.84	6.68
Reservoir Brook					33.3		11			0.41	6.86

#### HISTORICAL WATER QUALITY TREND ANALYSIS

Parameter	Trend	Explanation	Parameter	Trend	Explanation
Conductivity	Stable	Trend not significant; data moderately variable.	Chlorophyll-a	Stable	Trend not significant; data moderately variable.
pH (epilimnion)	Worsening	Data significantly decreasing.	Transparency	Stable	Trend not significant; data highly variable.
			Phosphorus (epilimnion)	Stable	Trend not significant; data show low variability.





**Lake Todd Village District**  
**TOWNS OF BRADFORD and NEWBURY, NEW HAMPSHIRE**  
**Saturday, June 24<sup>h</sup> 2017**

The Moderator, called the meeting to order at 9:10 a.m. Officers of the Lake Todd Village District were introduced. It was explained that in order to vote or to call a motion, you must be a registered voter in the LTVD. The moderator explained that the warrant articles would be voted on by a show of hands. The moderator also explained all people present could ask questions or make comments. Hard copies of the 2016 annual treasurer's report and Warrant Articles were distributed.

**ARTICLE 1. To see if the Village District will vote to elect by unofficial ballot the following:**

<b>Commissioner</b>	<b>- 3 year term - June 2017 to June 2020</b>
<b>Moderator</b>	<b>- 1 year term - June 2017 to June 2018</b>
<b>Clerk</b>	<b>- 1 year term - June 2017 to June 2018</b>
<b>Treasurer</b>	<b>- 1 year term - June 2017 to June 2018</b>
<b>Auditor</b>	<b>- 1 year term - June 2017 to June 2018</b>

The moderator read article one. Frederico Montanari moved for the article. Steve Snyder seconds. Nominations began.

- Commissioner, three year term. Frederico Monanari is nominated by Steve Snyder. Bill Weiler seconds. Moderator asked if there were any other nominations. There were none. Nomination is closed. The Moderator called for the vote. Frederico Monanari is elected.
- Moderator, one year term. Cynthia Snyder is nominated by Bill Weiler. Frederico Montanari seconds. The Moderator asked if there were any other nominations. There were not. A question was asked by Gary Wall what the term "resident" means. If you had to live on the lake or just own property. Commissioner Weiler responded you must be a full time resident to serve. With no other questions. Nomination is closed. The Moderator called for the vote. Cynthia Snyder is elected.
- Clerk, one year term. Bill Weiler nominated Cindy Snyder. Frederico Montanari seconds. Nomination is closed. The Moderator asked if there were any other nominations. There were not. The Moderator called for the vote. Cynthia Snyder was elected.
- Treasurer, one year term. Cindy Snyder nominated Margie Weiler, Steve Snyder seconds. The Moderator asked if there were any other nominations. There were not. Nomination is closed. Moderator called for the vote. Margie Weiler was elected.

- Auditor, one year term. Bill Weiler nominated Peter Carl, Stephen Snyder seconds. The Moderator asked if there were any other nominations. There were not. Nomination is closed. A question was asked by Gary Wall if the nominee was present and Beth Rodd asked if a nominee had to be. The Moderator explained the Nominee had agreed to the nomination and did not need to be present for the vote. With no other questions the Moderator called for the vote. Peter Carl was elected.

**ARTICLE 2. To see if the Village District will raise and appropriate the sum of \$29,593.00 for general municipal operations. This article does not include appropriations contained in special or individual articles addressed separately. (Majority vote required).**

The Moderator read article two.

Steve Snyder briefly reviewed the budget. Moderator asked if there were any questions. Beth Rodd asked what the water services charges were. Steve Snyder explained it was for the Dam registration fee. Beth also asked if the Dam belonged to the Mill House or to the District. Commissioner Snyder responded the Dam belongs to the Lake Todd Village District. Gary Wall asked what the pay off amount on the Dam repair loan was and the expected pay off time. Frederico Montanari pointed out the balance of \$99,417.02 noted on the annual report with 5 years left on the loan.

The Moderator asked if there were any other questions. With no further questions, Steve Snyder moved for the article, Cyn Snyder Seconds.  
A vote was taken. The motion was passed.

**Article 3. To see if the Village District will vote to raise and appropriate the sum of \$2,600 to complete the erection of a safety fence around the dam. This will be a non-lapsing appropriation per RSA 32:7, VI and will not lapse until December 31, 2020. Recommended by the Board of Commissioners. (Majority vote required).**

The Moderator read the article and asked if there were any questions. Gary Wall asked Why and Where. Steve Snyder responded on the West side for safety issues to prevent someone from falling in.

With no further questions, Steve Snyder moved to adopt. Bill Weiler seconds.  
A vote was taken. The motion was passed.

**Article 4. To see if the village district will vote to raise and appropriate the sum of \$6,000.00 to be added to the Lake Todd Dam Non-Capital Reserve Fund previously established. This sum to come from the unassigned fund balance. No amount to be raised from taxation. (Recommended by the Board of Commissioners). (Majority vote required).**

The Moderator read the article. Bill Weiler explained what the NCR fund was and why there was an unassigned surplus balance. Bill Weiler and Steve Snyder also gave some examples of what an unexpected Dam expenses might be. Gary Wall asked how much was in the fund currently. Bill Weiler answered \$9,000. Gary asked if there was a savings goal. Bill Weiler said there was not.

With no further questions, Bill Weiler moves to adopt. Frederico Monatanari Seconds. A vote was taken. The motion was passed.

**Article 5. To transact any other business that may legally come before said meeting.**

Bill Weiler moved to adopt. Steve Snyder seconds.

Other business discussion:

The Moderator read asked if anyone had any other business they wanted to speak about.

Beth Rodd asked if flares would be sold this year. Cyn Snyder said yes and she would be sending an email and would be coming around over the weekend.

Weed Watchers: Commissioner Snyder gave the update and an overview of the changes in the weed maps from previous years. He explained how the weather and boating traffic have continued to increase the spread of some of the more invasive NON exotic plants and algae bloom. Commissioner Snyder also gave an overview of the Lake Sunapee Lake Associations meeting we attended at the end of last year and some information about Cyano bacteria outbreak we had. Commissioner Snyder will be sending out notice about the weeds and suggestions to boaters to help reduce weed spread.

Water Quality: Commissioner Snyder gave an update on water testing to be done the Lausten's June 25<sup>th</sup> and the end of July and in August the state biologist will come to do the third test. It was noted the test results are posted on the LTVD web page and that generally there have been little to no issues with water quality over the last several years.

Wild life / Loon update by the Snyder's: Pair of bald eagles hunting on our lake. They have taken a couple of baby geese and ducklings. The loons did not choose to nest this year.

Steve mentioned proposed dates for the LTVD Social to be held on either August 12 or 19 and location to be discussed and a notice will go out.

The moderator asked if there were other questions from the floor.

Gary Wall asked to make known to the LTVD commissioners that he had a house not in the district and a small piece of property across the street that was on the lake but was deeded as unbuildable lot with lake access. He was trying to sell the house and wanted the LTVD to note that he was working with the town selectmen to clear his house from the LTVD. He will be calling for a special meeting with the LTVD to have the property taken off the district tax list.

With no further questions the moderator moved to adjourn the meeting. Bill Weiler seconds. The motion was accepted and the meeting was adjourned at 10:00 a.m.

Respectfully submitted by:



Cynthia Snyder  
Lake Todd Village District Clerk

Lake Todd Village District

Dam Improvement Project

Calendar Year	Engineering	Legal	Permits & Fees	Easement	Inspections	Daniels Construction	Penstock Work	Totals
2007	\$ 3,200.00							\$ 3,200.00
2008	\$ 484.04		\$ 4,000.00					\$ 4,484.04
2009	\$ 8,429.00	\$ 400.00						\$ 8,829.00
2010	\$ 3,548.35	\$ 1,684.50	\$ 504.12					\$ 5,736.97
2011	\$ 5,520.40	\$ 2,955.88	\$ 578.00	\$ 6,000.00	\$ 12,000.00	\$ 79,650.00		\$ 106,704.28
2012	\$ 552.75				\$ 6,400.00	\$ 162,850.00	\$ 605.48	\$ 170,408.23
Totals	\$ 21,734.54	\$ 5,040.38	\$ 5,082.12	\$ 6,000.00	\$ 18,400.00	\$ 242,500.00	\$ 605.48	\$ 299,362.52

Original Loan Amount      \$ 204,500.00

2017 End-of-Year Loan Balance      \$ 88,997.00